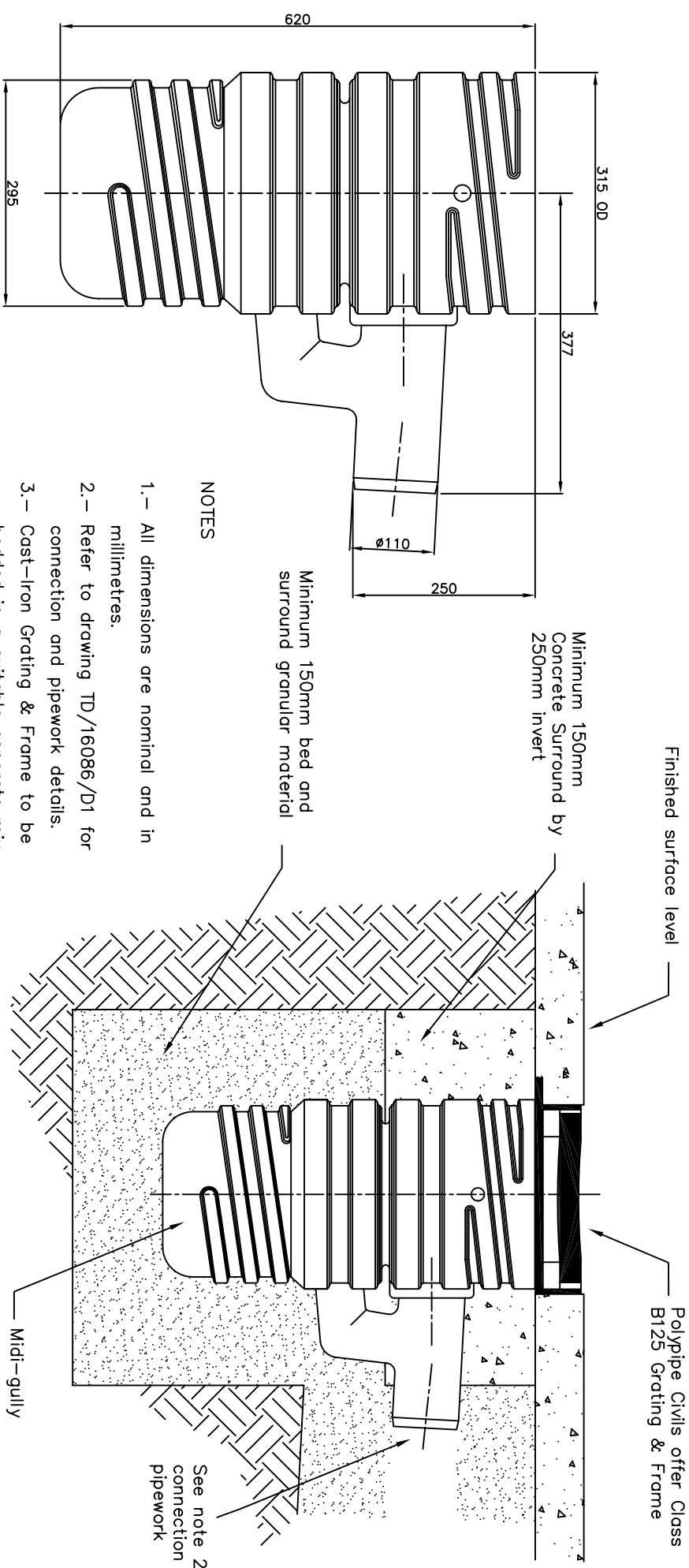


MIDI-GULLY 300mm Diameter x 600mm Depth HDPE Yard Gully	Product Code RG3000600
---	---------------------------



- NOTES**
- 1.- All dimensions are nominal and in millimetres.
 - 2.- Refer to drawing TD/16086/D1 for connection and pipework details.
 - 3.- Cast-Iron Grating & Frame to be bedded in a suitable concrete mix.
 - 4.- This document is uncontrolled and updates will not be issued automatically.

This information is for guidance purposes only. Please note that we may change the information from time to time, for a variety of reasons. This information cannot be relied upon to determine the suitability or installation requirements of our products for your particular site conditions or application; expert advice is required in this respect. Final determination of the suitability of any information or installation for your intended use and in particular use is our sole responsibility and we do not assume all risk and liability in this regard. This information is not intended to have any legal effect, whether by way of advice, representation or warranty. However, our technical staff will be happy to discuss your particular application and site conditions in further detail.



Polypipe Civils Ltd.
Civils & Agricultural Products
 UNION WORKS, BISHOP MEADOW ROAD,
 LOUGHBROUGH, LEICESTERSHIRE, LE11 5RE,
 TEL: 01509 615100 FAX: 01509 615205

DRAWING STATUS:	FOR INFORMATION
DRAWING TITLE	TYPICAL MIDI-GULLY TECHNICAL DETAIL

PROJECT REF:	SCALE
CAD File: 16111D1_REVA.DWG	NOT TO SCALE
POLYPIPE DRAWING NO. TD/16111/D1	REV
A	A

DRAWN BY	IDA	26/03/02
CHECKED		
DIMENSIONS IN MILLIMETRES UNLESS OTHERWISE STATED		

Text added	27/06/02
CHANGES	DATE